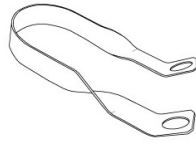


Installation Instructions

Parts List |



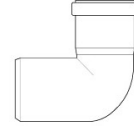
2 x screws No. 19



1 x fitting No. 15



2 x screws fitting No. 15



1 x 87° bend

Fitting Kit |



1 x uriLOCK 0.3L



1 x uriCLEAN 0.5 L



1 x uriCLOTH



1 x Cover



1 x suction device

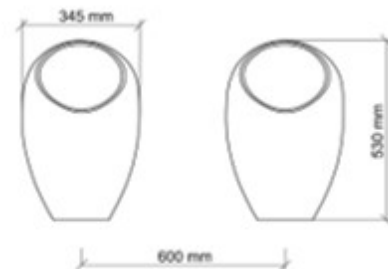
Note |

Installation of the uridan waterless urinal is very simple.

If you are retrofitting existing flushing urinals with uridan waterless urinals, please ensure that the sewer line is jetted and clean of uric scale before installation. Please also remove any existing s-trap to avoid double trapping the urinal.

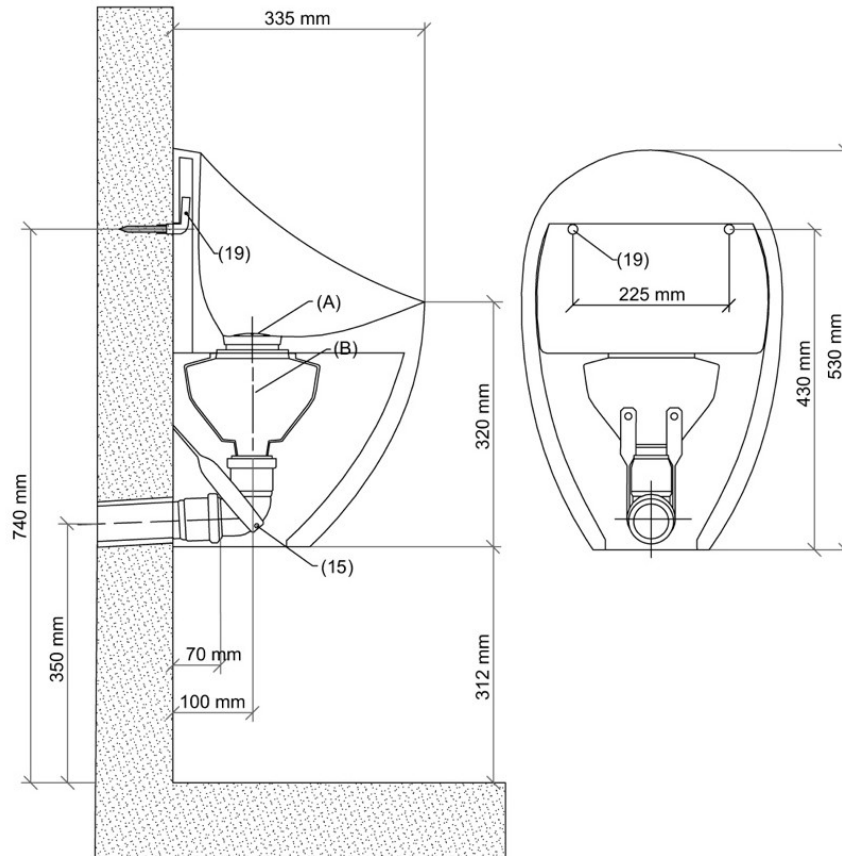
The uridan urinals work without water, and must be fitted to a 50mm waste pipe. Installation should be carried out by authorized plumbers in accordance with AZ/NZS3500.2.

PLEASE NOTE: The undiluted discharge from a waterless urinal must not be transported through copper or copper alloy pipework.



Installation Instructions

CADET KHC-10
ceramic | horizontal waste



Installation

1. Measure the height from the center of the waste pipe and mark the holes for both special screws (No. 19). Drill holes and mount screws.
2. Install the 87° bend, keeping the distance of 100 mm from the wall to the middle of the pipe. The pipe connection is now established.
3. Adjust fitting No. (15), mark and drill holes and mount fitting No. (15).
4. Hold the urinal against the wall and push firmly onto the fitting No. (19) ensuring the waste pipe connection is maintained.

Please note: There should be a gap of approx. 2 to 5 mm between the urinal and the wall, so tension cracks can be prevented.

5. Fill the waste trap (Position B) with water.
6. Insert the stainless steel cover (Position A).
7. Pour 1 bottle uriLOCK (0.3 liter) over the cover.
8. Seal the gap between the wall and the urinal with silicone.

The uridan urinal is now ready for use!

**Please leave customer care booklet, cleaning and maintenance instructions,
cleaning spray, cleaning cloth and suction device with customer.**