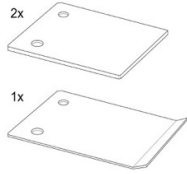


Installation Instructions

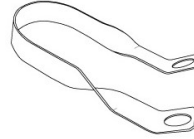
Parts List |



3 x screws No. 8



10 x screws fitting No. 8



1 x fitting No. 14



2 x screws fitting No. 14

Fitting Kit:



1 x uriLOCK 0.3 L



1 x uriCLEAN 0,5 L



1 x uriCLOTH



1 x Cover



1 x suction device

Note |

Installation of the uridan waterless urinal is very simple.

If you are retrofitting existing flushing urinals with uridan waterless urinals, please ensure that the sewer line is jetted and clean of uric scale before installation. Please also remove any existing s-trap to avoid double trapping the urinal.

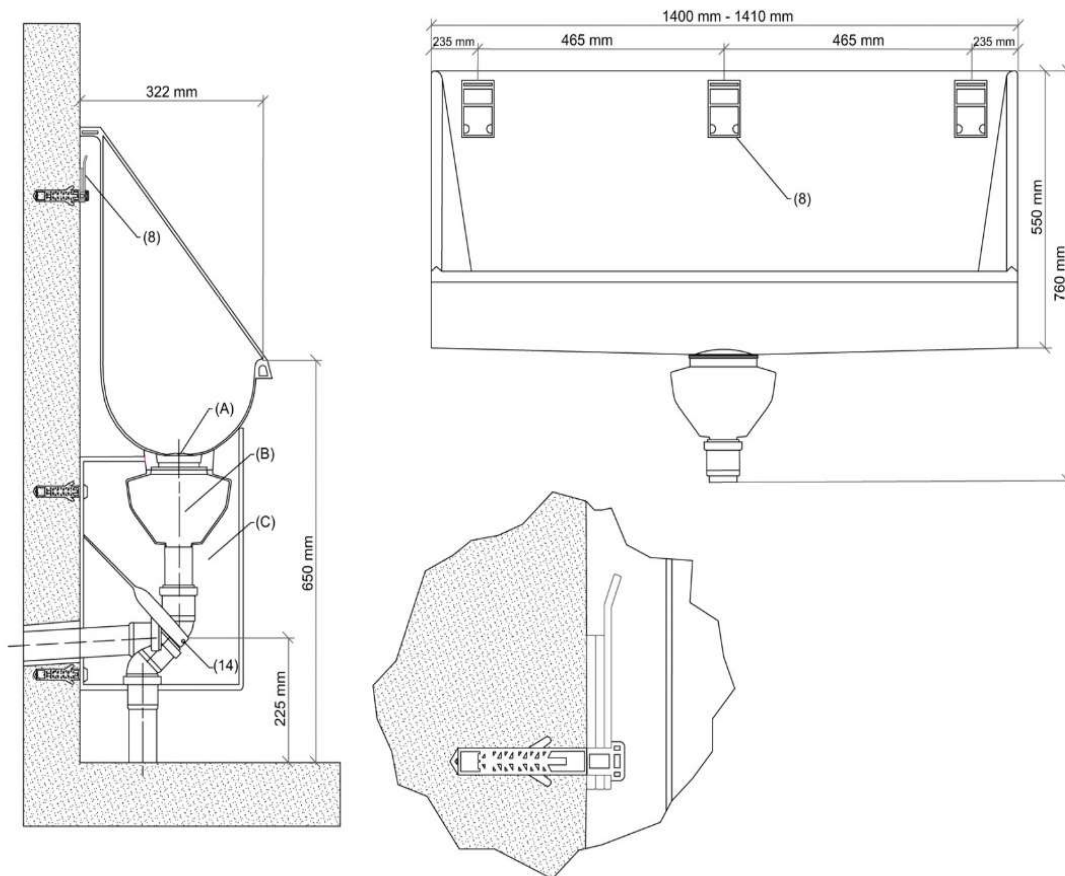
The uridan urinals work without water, and must be fitted to a 65mm waste pipe. Installation should be carried out by authorized plumbers in accordance with AS/NZS3500.1 and AS/NZS3500.2.

PLEASE NOTE: Refer AS/NZA 3500.2:2025 Clause 13.24.2.3 for installation limitations for undiluted discharge from a urinal.

Installation Instructions

CREW 140 cm GR1400-10

Glass reinforced plastic (GRP) | horizontal/vertical



Installation

1. Mark holes for fittings No. (8) and install brackets.
2. Hold the urinal against the wall and press firmly onto fittings No. (8) and the waste pipe.
3. Adjust fitting no. (14), mark and drill holes, and mount fitting no. (14).

Please note: Fitting no. (14) is only mounted with a horizontal waste connection!

4. Install shroud (Position C) with the enclosed screws.
5. Fill the waste trap (Position B) with water.
6. Insert the stainless steel cover (Position A).
7. Pour 1 bottle uriLOCK (0.3 litre) over the cover.
8. Seal the gap between the wall and the urinal with silicone.

The uridan urinal is now ready for use!

**Please leave customer care booklet, cleaning and maintenance instructions,
cleaning spray, cleaning cloth and suction device with customer.**